

2233N5C2B $\varnothing 22\text{mm} \times 33.7\text{mm}$, 碳刷 Graphite Brushes

应用领域: 医疗、保健、汽车、机器人、工业自动化等精密驱动领域。

Applications: precision drives in medical equipment and devices, healthcare products, automotive, robotics, and industrial automation.

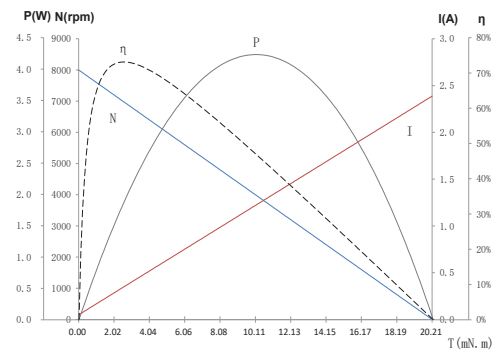
08-80-7.4 14-85-12.0 11-77-24.0

电机参数 / Motor Data			08-80-7.4	14-85-12.0	11-77-24.0	
1	电压	Voltage	V	7.4	12.0	24.0
2	端电阻	Terminal resistance	Ω	3.1	5.8	24.5
3	空载转速	No-load speed	rpm	8000	8500	7700
4	空载电流	No-load current	mA	50	35	12
5	堵转转矩	Stall torque	mNm	20.2	27.0	28.5
6	堵转电流	Stall current	mA	2390	2070	980
7	额定转矩	Nominal torque	mNm	5.0	6.0	6.0
8	额定转速	Nominal speed	rpm	6020	6610	6080
9	额定电流	Nominal current	mA	630	490	220
10	最大输出功率	Max. output power	W	4.2	6.0	5.7
11	最大效率	Max. efficiency	%	73	76	79
12	反电势常数	Back-EMF constant	mV/rpm	0.9	1.4	3.1
13	转矩常数	Torque constant	mNm/A	8.6	13.3	29.4
14	转速 / 转矩斜率	Speed/torque gradient	rpm/mNm	400	300	300
15	转子惯量	Rotor inertia	gcm^2	2.5	2.5	2.5
16	重量	Weight	g	52	52	52

热参数 / Thermal Data				
17	热阻 (机壳 - 环境)	Thermal resistance housing-ambient	K/W	21
18	热阻 (线圈 - 机壳)	Thermal resistance winding-housing	K/W	11.2
19	热时常数 (电机)	Thermal time constant motor	s	240
20	热时常数 (线圈)	Thermal time constant winding	s	10
21	工作温度范围	Operating temperature range	$^{\circ}\text{C}$	-20~+85
22	绕组耐温等级	Thermal class of winding	$^{\circ}\text{C}$	130

特性曲线 / Characteristics Curve

2233N5C2B08-80-7.4



— 转速 (N) — 电流 (I) - - - 效率 (η)
— 功率 (P)

仅供参考, 详细了解请以产品规格书为准。
For reference only, please refer to the product specification.

机械参数 / Mechanical Data				
23	轴向间隙	Axial play	mm	0.02-0.15
24	径向间隙	Radial play	mm	0.014
25	动态轴向载荷	Axial load dynamic	N	2
26	静态轴向载荷	Axial load static	N	60
27	径向载荷 (距安装面 3mm)	Radial load at 3 mm from mounting face	N	2

其它参数 / Other Specifications			
28	极对数	No. of pole pairs	1
29	滚动轴承	Ball bearings	2
30	换向结构	Number of commutator segments	5
31	防护等级	Protection class	IP40

可选配置 / Options

齿轮箱: 行星齿轮 齿轮组主要技术指标详见第 133 页
Gearbox: planetary gearbox the main technical parameters are detailed on page 133

性能 Special coils: 连续运行范围内可定制 customizable in continuous operation range

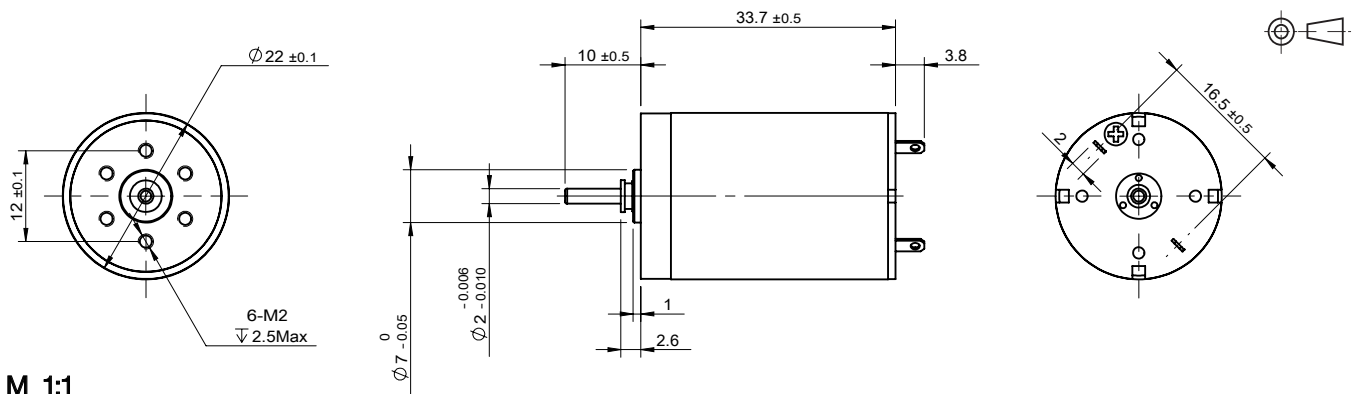
法兰 Flange: 标准前后法兰 standard front and rear flanges / 定制法兰 custom flanges

轴 Shaft: 长度 length / 异形 shape

轴承类型 Bearing type: 含油轴承 sleeve bearings/ 滚珠轴承 ball bearings

电气连接 Electrical connection: 端子或导线 connector or wire / 导线长度 lead wires length

外观图 / Outline Drawing



规格如有变更, 恕不另行通知。Specification subject to change without notice.

www.constarmotor.com